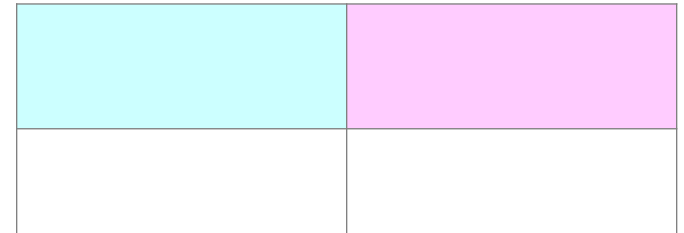






Product # 15* x Q Q'Q, Q Q Q, Q40N1Q0`E
Beef Boxed cutout, Choice 13, 600 900 lbs
Q0-Q000QAQW0
QÚS \$/cwt QÛ

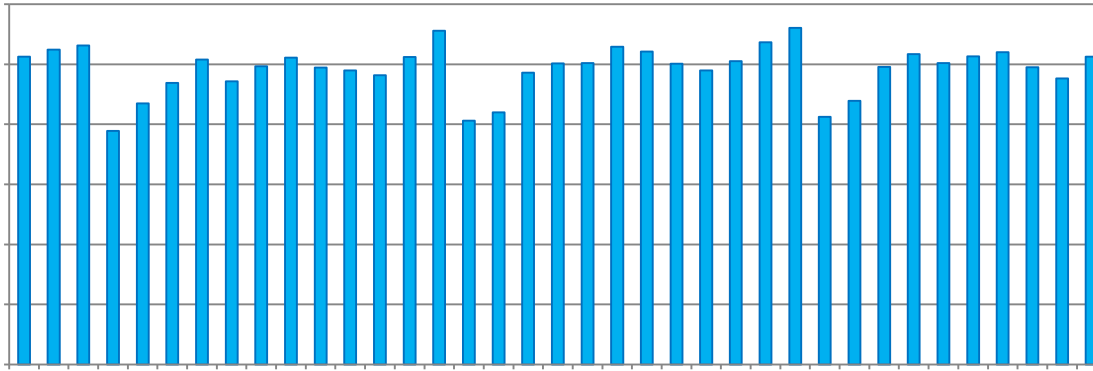


Product # 1Ü* x Q Q'Q, Q Q Q, Q40N1Q0`E
Pork Cutout composite carcass, 534% lean



Supply and Demand Trends ihlams and Sausages

Copyright (C)2015 NH Foods Ltd. All rights reserved.



Pork

Source

The table consists of 10 rows, each with a yellow background. The columns are labeled 'Pork' and 'Source'. The rows are currently empty.

PŽ141-6014 $\frac{3}{4}$ ě4"] ± ě 2Qß